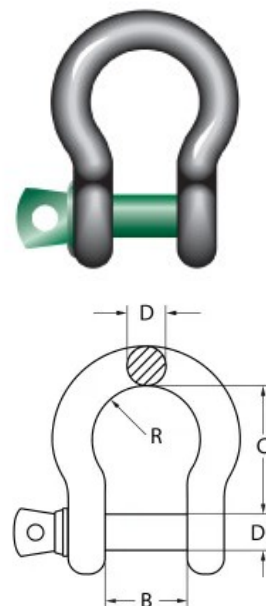


## Visokootporni škopci tip PSO, PSOB, PSN i PSNB

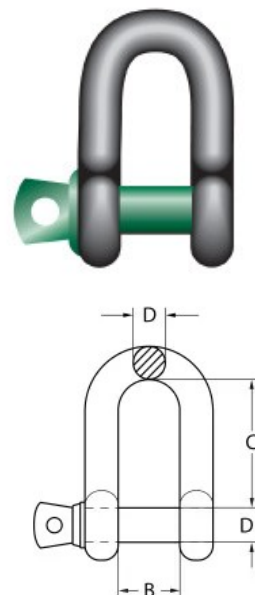
PSO omega škopci, svojim oblikom potkove omogućuju lakši prihvat priveznica.

Tip	Nosivost	D1	D1	B	C	D	R	Težina
	T	mm	inch	mm	mm	mm	mm	kg
PSO 0.5	0,5	8	1/4	12	29	6,5	10	0,05
PSO 0.75	0,75	10	5/16	13,5	31	8	10,75	0,1
PSO 1	1	12	3/8	17	36,5	9,5	13	0,13
PSO 1.5	1,5	14	7/16	19	43	11	14,75	0,21
PSO 2	2	16	1/2	20,5	48	13	16,5	0,3
PSO 3.25	3,25	20	5/8	27	60,5	17,5	21,5	0,64
PSO 4.75	4,75	22	3/4	32	71,5	20,5	25,5	1,09
PSO 6.5	6,5	27	7/8	36,5	84	24,5	29	1,7
PSO 8.5	8,5	30	1	43	95	27	34,25	2,5
PSO 9.5	9,5	33	1 1/8	46	108	32	37	3,79
PSO 12	12	36	1 1/4	51,5	119	35	41,25	4,89
PSO 13.5	13,5	39	1 3/8	57	133,5	38	46	7,04
PSO 17	17	42	1 1/2	60,5	146	41	49,25	8,35
PSO 25	25	52	1 3/4	73	178	57	63,5	13,72
PSO 35	35	60	2	82,5	197	61	73	20,33
PSO 55	55	72	2 1/4	105	267	79,5	92	40,92



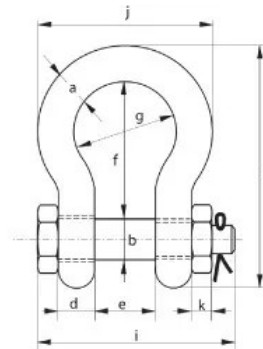
PSN škopac je namijenjen za standardnu primjenu, tijelo je u obliku slova U.

Tip	Nosivost	D1	D1	B	C	D	R	Težina
	T	mm	inch	mm	mm	mm	mm	kg
PSN 0.75	0,75	10	5/16	13,5	26	8		0,08
PSN 1	1	12	3/8	17	32	9,5		0,13
PSN 1.5	1,5	14	7/16	19	36,5	11		0,2
PSN 2	2	16	1/2	20,5	41,5	13		0,27
PSN 3.25	3,25	20	5/8	27	51	16		0,57
PSN 4.75	4,75	22	3/4	32	60,5	19		0,99
PSN 6.5	6,5	27	7/8	36,5	71,5	22,5		1,57
PSN 8.5	8,5	30	1	43	81	25,5		2,3
PSN 9.5	9,5	33	1 1/8	46	91	29		3,42
PSN 12	12	36	1 1/4	51,5	100	32		4,48
PSN 13.5	13,5	39	1 3/8	57	111	35		6,46
PSN 17	17	42	1 1/2	60,5	122	38		7,65
PSN 25	25	52	1 3/4	73	146	44,5		12,48
PSN 35	35	60	2	82,5	171,5	51		18,63
PSN 55	55	72	2 1/4	105	203	66,5		36,02



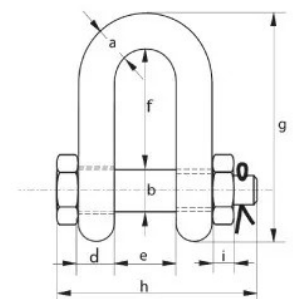
PSOB izvedba omogućuje osiguranje svornjaka navojem i rascepkom.

Tip	Nosivost	b	b	a	h	i	e	f	g	k	Težina
	T	mm	inch	mm	mm	mm	mm	mm	mm	mm	kg
PSOB 2	2	16	1/2	13	83.3	70.5	20.5	48	33.3	8	0.31
PSOB 3.25	3,25	20	5/8	17.5	106.5	89	27	60.5	42.9	10	0.67
PSOB 4.75	4,75	22	3/4	20.5	125.5	105	32	71.5	50.8	10	1.14
PSOB 6.5	6,5	27	7/8	24.5	148.1	121	36.5	84	58	12	1.76
PSOB 8.5	8,5	30	1	27	166.6	136.5	43	95	68.4	13.5	2.58
PSOB 9.5	9,5	33	1 1/8	32	190	149.5	46	108	74	15	3.96
PSOB 12	12	36	1 1/4	35	209.6	164.5	51.5	119	82.6	18	5.06
PSOB 13.5	13,5	39	1 3/8	38	232.7	179	57	133.5	92.2	19	7.29
PSOB 17	17	42	1 1/2	41	254	194.5	60.5	146	98.6	20	8.75
PSOB 25	25	52	1 3/4	57	313.5	234	73	178	127	39	14.22
PSOB 35	35	60	2	61	347.5	262.5	82.5	197	146	46	21
PSOB 55	55	72	2 1/4	79.5	453.2	339	105	267	184.2	58	42.12
PSOB 85	85	85	2 3/4	92	546	394	127	330	200	64	74.8



PSNB kao i PSOB ima svornjak koji se osigurava maticom i rascepkom.

Tip	Nosivost	b	b	a	h	i	e	f	Težina
	T	mm	inch	mm	mm	mm	mm	mm	kg
PSNB 2	2	16	1/2	13	71,5	8	20,15	41,5	0,28
PSNB 3.25	3,25	20	5/8	16	89	10	27	51	0,6
PSNB 4.75	4,75	22	3/4	19	105	10	32	60,5	1,04
PSNB 6.5	6,5	27	7/8	22,5	121	12	36,5	71,5	1,63
PSNB 8.5	8,5	30	1	25,5	136,5	13,5	43	81	2,38
PSNB 9.5	9,5	33	1 1/8	29	149,6	15	46	91	3,59
PSNB 12	12	36	1 1/4	32	164,5	18	51,5	100	4,65
PSNB 13.5	13,5	39	1 3/8	35	179	19	57	111	6,71
PSNB 17	17	42	1 1/2	38	194,5	20	60,5	122	8,05
PSNB 25	25	52	1 3/4	44,5	234	39	73	146	13,18
PSNB 35	35	60	2	51	262,5	46	82,5	171,5	19,3
PSNB 55	55	72	2 1/4	66,5	339	58	105	203	37,22
PSNB 85	85	85	2 3/4	76	394	64	127	216	65,3



Škopci su pri završnoj obradi galvanizirani.

Sukladno normi EN 13889, faktor sigurnosti SF je 1:5.